



Liquor Distribution Center

February 13, 2018

Jody Korchinski, VP Liquor Services



Liquor Distribution Centre

History

New DTC progress
update

Transition plan

CLS Contract
Review



Then and Now



Supply Chain Review



Alberta

Gaming and Liquor Commission



Liquor Warehousing and Distribution in Alberta –
Supply Chain Analysis

Supply Chain Monitoring

Licensee Service KPIs

1. Goods Shipped on Time

- 2 business days after order received
- Target = 99%

2. Goods Delivered on Time

- Within 1 hour of Scheduled delivery
- Same day delivery for unscheduled delivery
- Target = 99%

3. Order Completeness

- Orders assemble in time for shipping
- Target = 99.5%

4. Perfect Order

- Order accuracy (product & quantity)
- Target = 100%

Agency Service KPIs

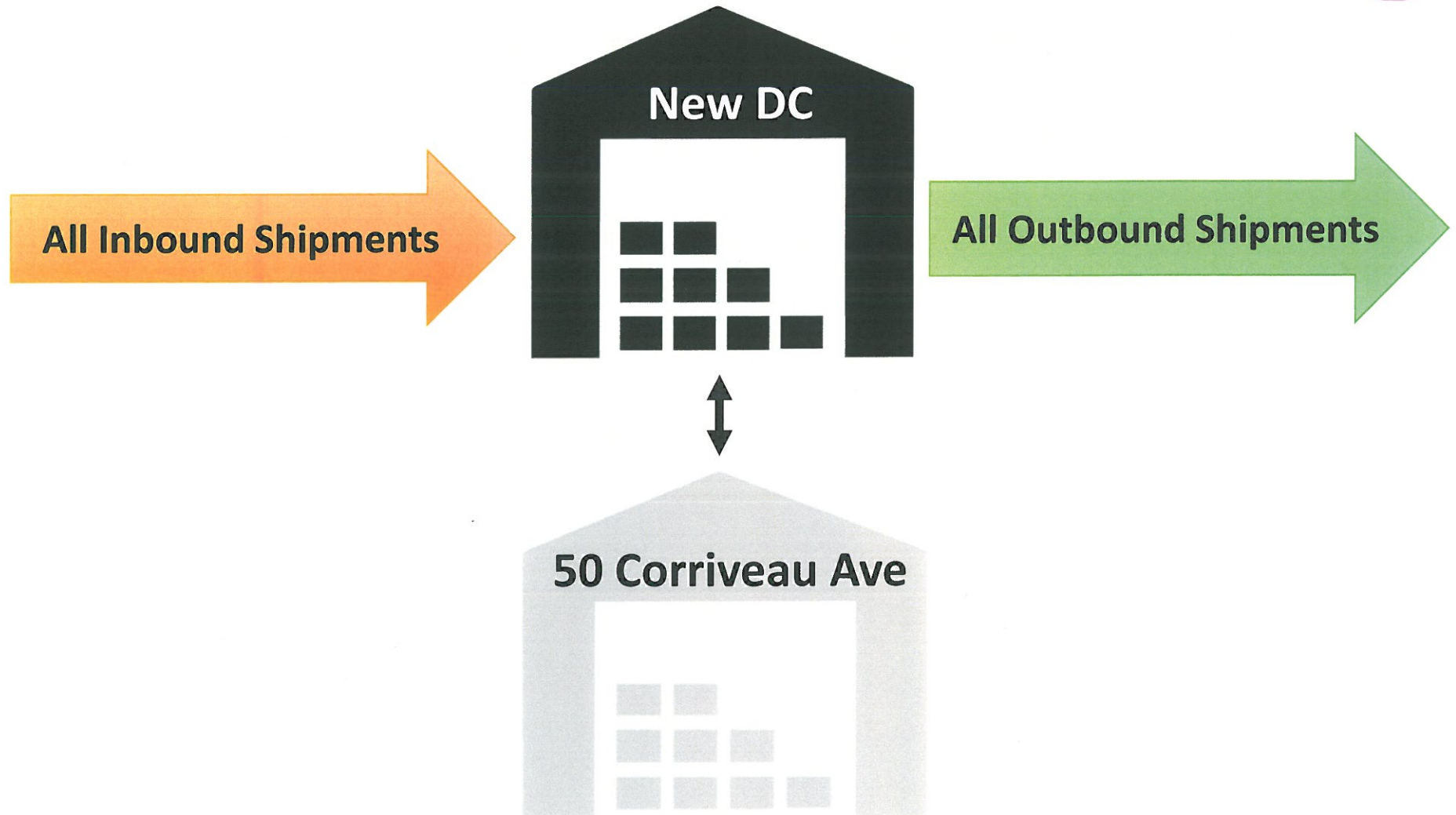
5. Receiving Scheduled Loads on Time

- All booked loads received
- Target = 98.5%

6. Goods Available for Sale on Time

- Received goods available for sale by following day
- Target = 99%

LIDD Recommendation



Expected Outcomes

Cost savings:

- ↓ Labour
- ↓ Product Shuttle
- ↓ Lease

**= Simplified operations
& better service**



Design Concept



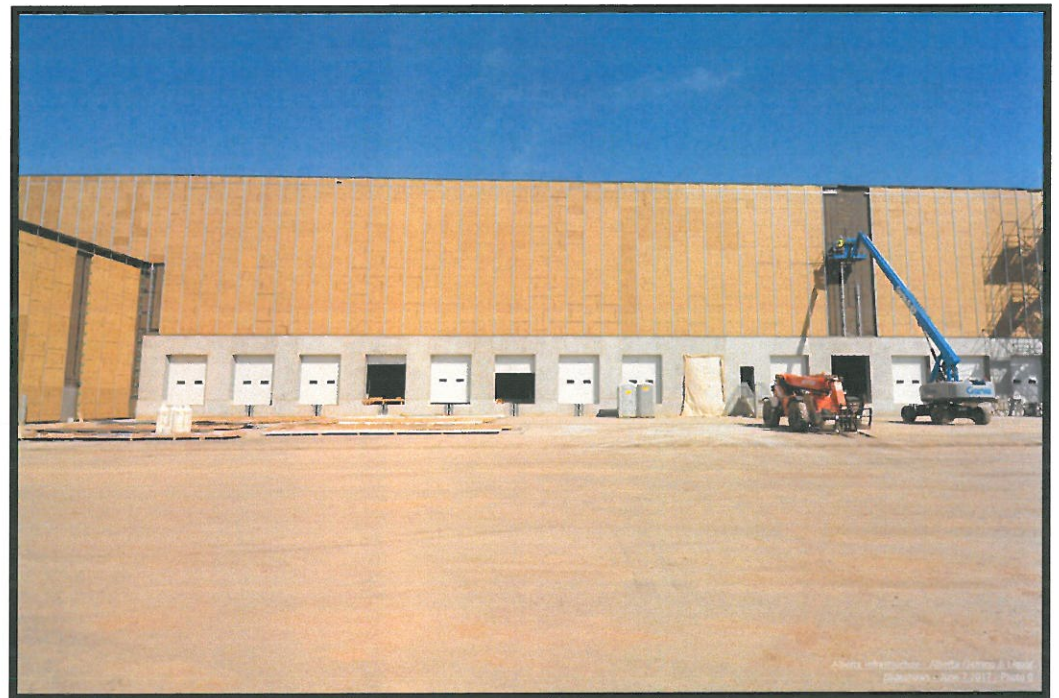
And....GO!



Groundbreaking ceremony at the new liquor distribution centre in St. Albert; July 4, 2014.

Eric Szeto, Global News

2 Boudreau (DC2)

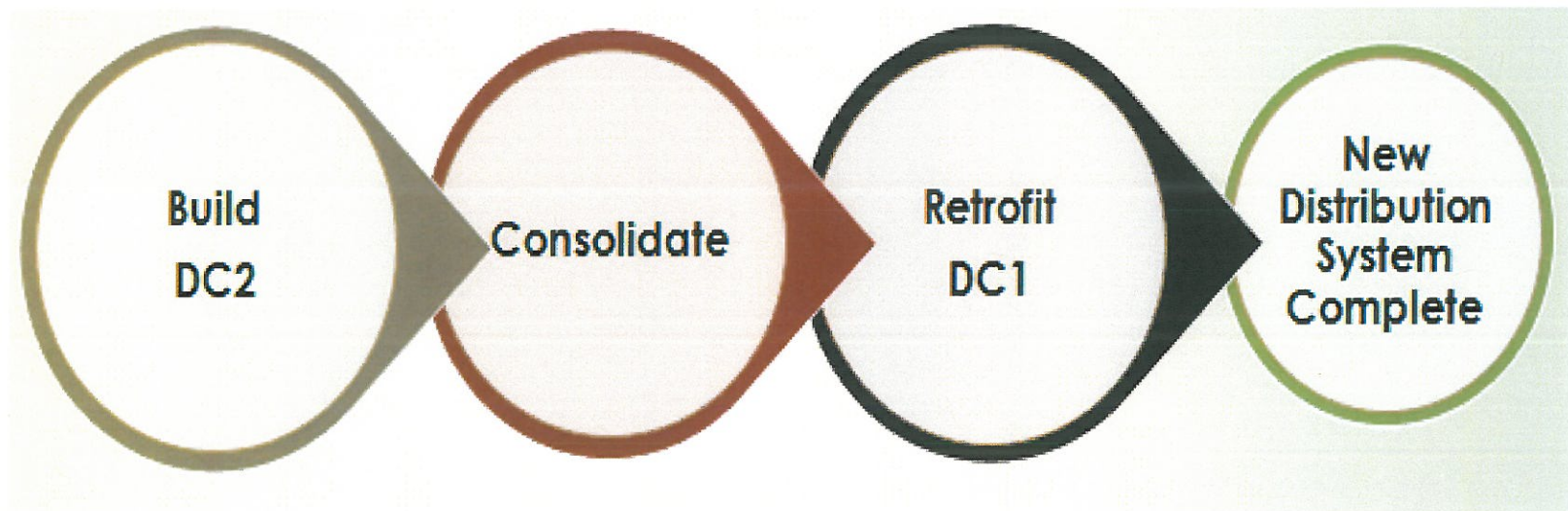


2 Boudreau (DC2)

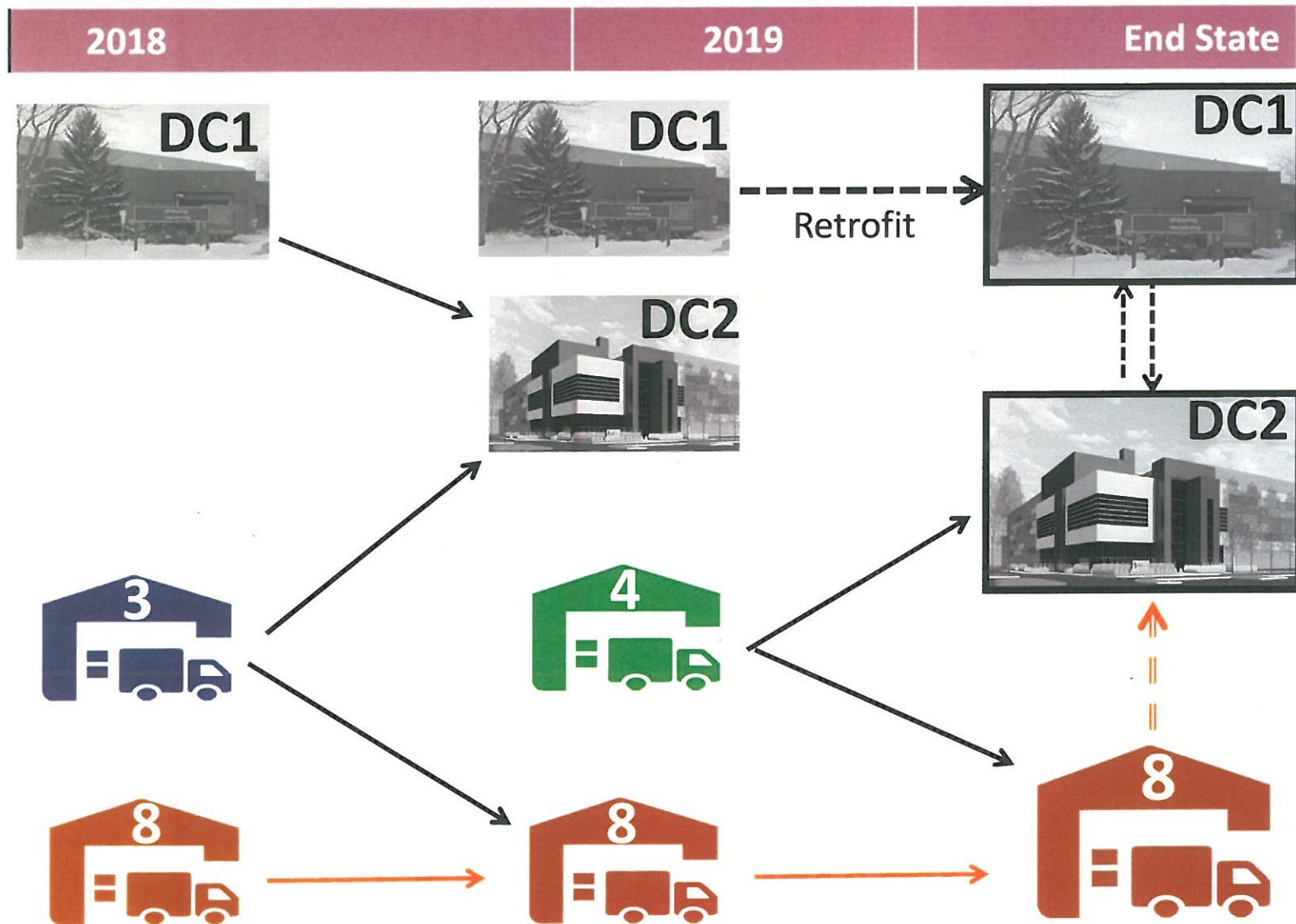


What's on the Horizon

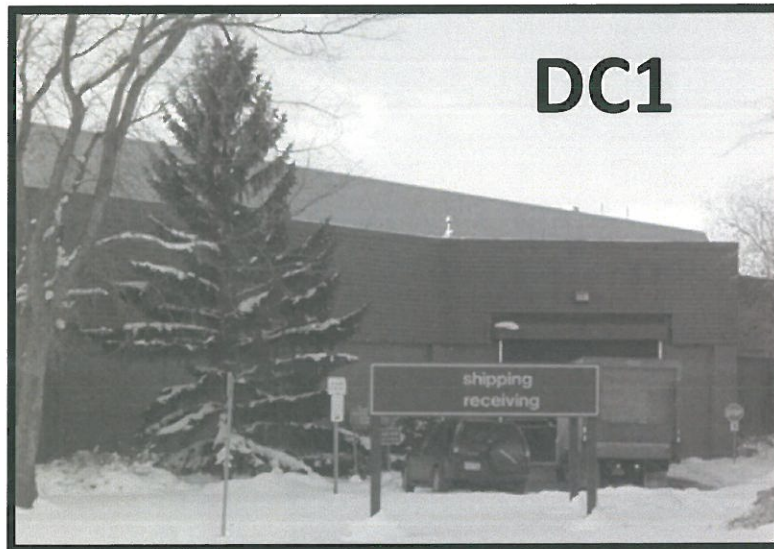
- Transition Plan



Transition Plan



New Network Storage System



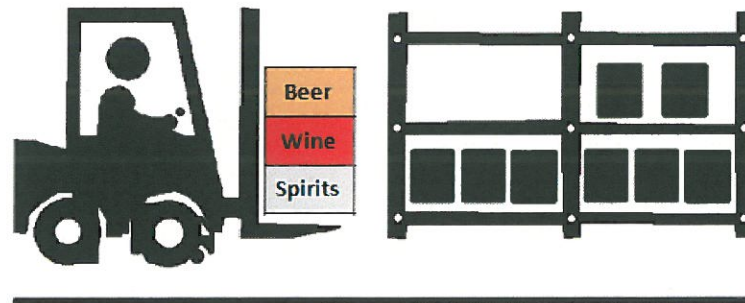
Next Steps: Warehouse Operator RFP



☐ RFP
Closed

☐ Proponent
Announced

☐ CLS Contract
Expires



CLS Contract Review

Operator Agreement Review





Questions?